

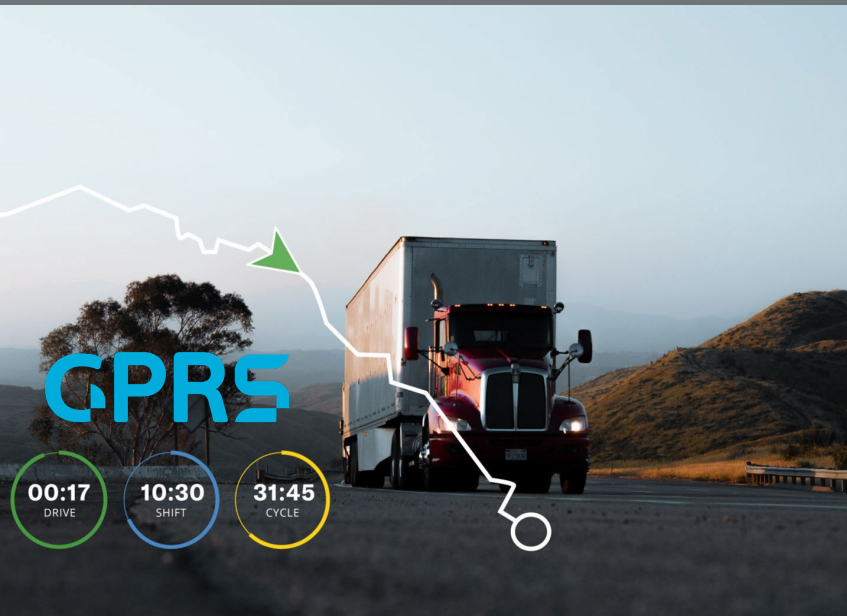
# SKYTRACK COMPLETE FLEET MANAGEMENT PLATFORM

---

Power up your fleet with GPRS!



# Who We Are



Skytrack is a Greek software company (SaaS) based in Thessaloniki, Greece. It was founded by industry professionals with years of experience in software system design, telemetry, integrated computer systems, communications and database design. All the software we offer is exclusively designed and developed by us, allowing us to adapt in every customer need by offering tailor-made solutions.



Fleet Management



Eco Tuning



App Development



Internet of Things

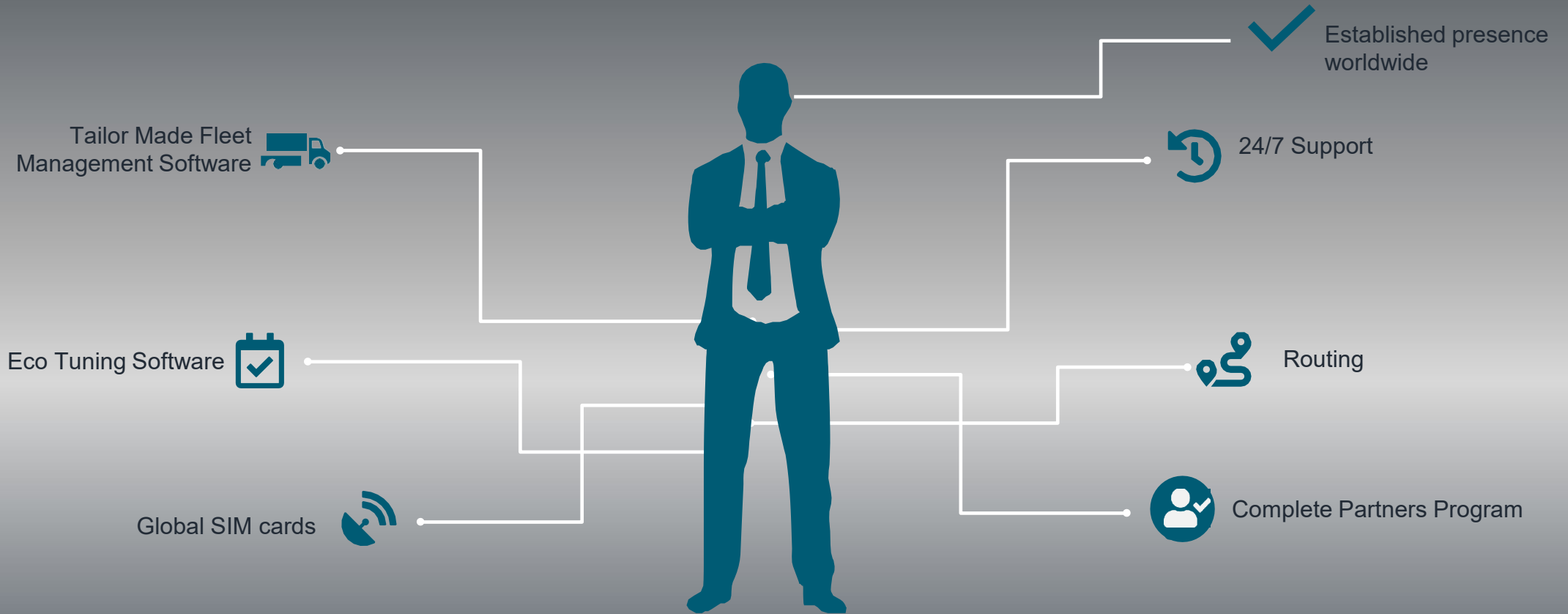


Software Development

# Our Partners



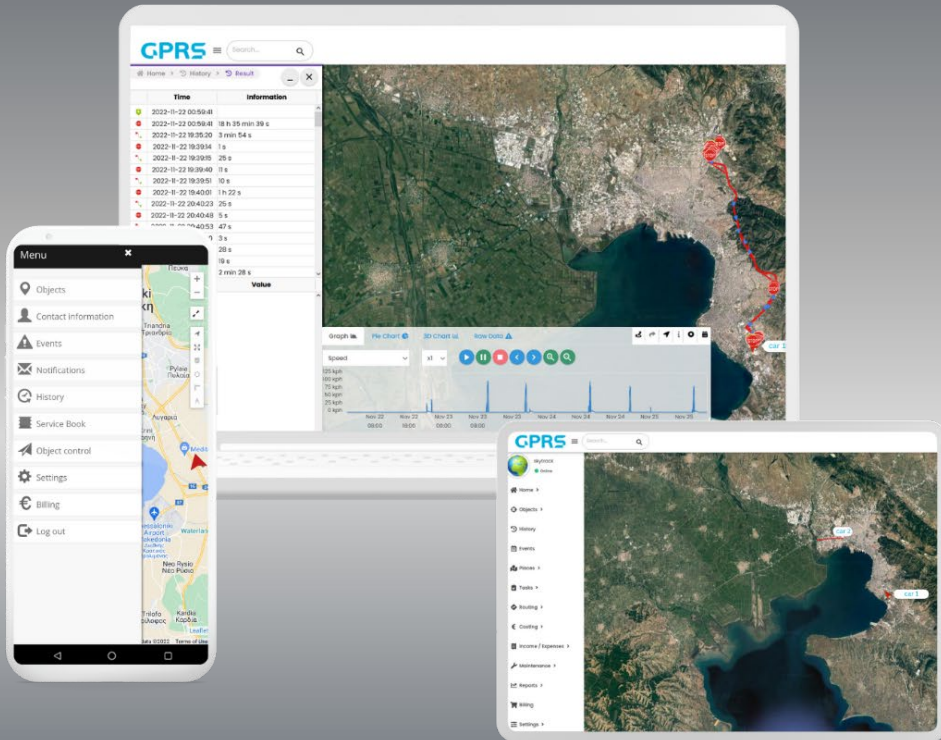
# Unique Key Features



**Our unique solutions offer multiple benefits to each and every business!**



# Tailor Made Fleet Management



## GPRS Fleet Management Platform

All in one with GPRS! Our system is Control your fleet easily and efficiently with our user- friendly application. Our GPS tracking devices provide real time information flow, allowing access to a variety of fleet management features online. Receive instant alerts and notifications in your smartphone, tablet or PC. Stay connected with your business assets on the go, from any part of the world.

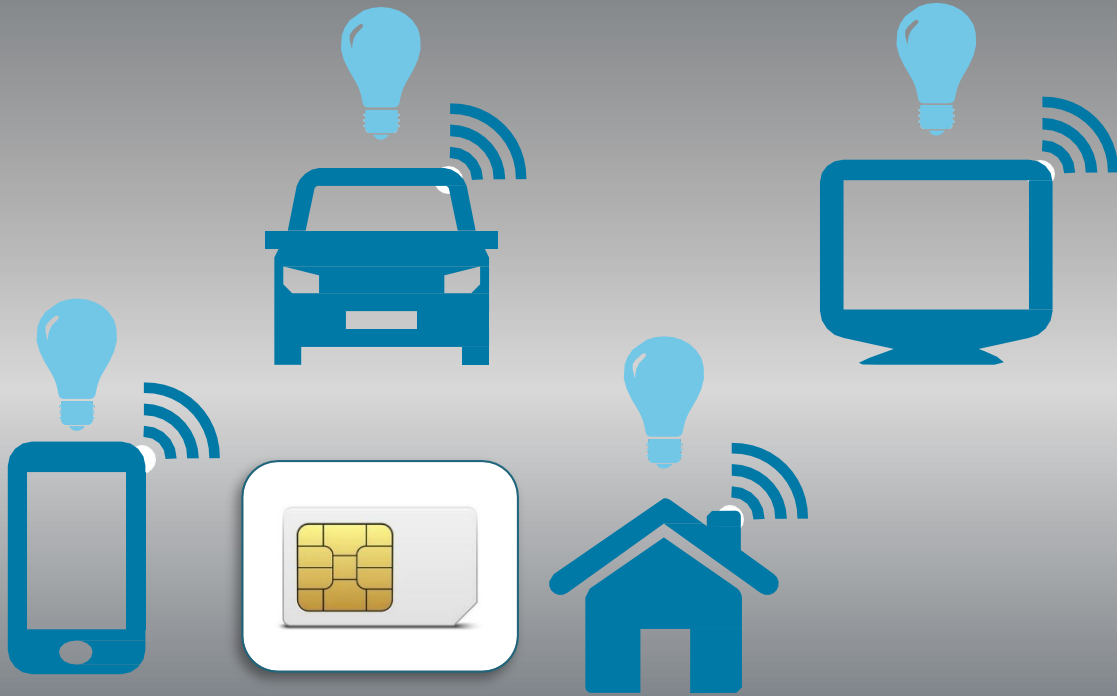
## Tailor Made Solution

Our Software can be tailor made according to each customer's needs. We have an in house development team that can customize our platform and offer different features to our customers.

Easy to use – Simple to master

# Global SIM

Stay connected with your assets at all times



Our Global SIM cards can be applied in a multitude of roles, such as in IoT and M2M communication, adding value and flexibility to every sector. Specifically, they provide:



Continuous and immediate data flow between devices and platforms.



Automatically connect to the strongest network signal provider in over 200 countries at no extra cost.



Easy and simple process of use, as all operations are done automatically without the need for separate payments.

For example, a GPS tracker device with a built-in global SIM can monitor the movement of a vehicle and send alerts in real time from anywhere in the world. When moving from one region (or country) to another, the Global SIM card connects automatically and free of charge to the strongest provider in the local network.

# Eco Tuning

The key to significant reduction of fuel consumption in vehicles

Reprogramming the  
engine ECU



Reduction of fuel  
consumption in  
vehicles

Benefits



- Improving Fuel Efficiency
- Reduced Emissions
- Increase engine performance
- Smoother vehicle handling

# Route Planning

A complex task made easy



- **Assign tasks in real time to any vehicle. GPRS provides a list with the closest available vehicles that can be assigned on a new task, based on specific filters such as vehicle type and cost estimation.**
- **Distance to target, travel time and estimated time of arrival will be displayed to assist you in making the optimal decision. Driver profile and tachograph information can also be displayed.**
- **If the driver cannot complete their assignment in the estimated timeframe, GPRS will exclude the specific vehicle from the list of results.**

- Check vehicle type and availability in each area
- Know the distance to target and the time required for each task
- Estimate cost trips automatically and plan accordingly
- Assign tasks in real time
- Send detailed instructions to your drivers

- Discover the best option for every scenario
- Improve your delivery times
- Boost customer satisfaction
- Reduce costs and delays to a minimum
- Enhance your operational efficiency



# Established Worldwide Presence

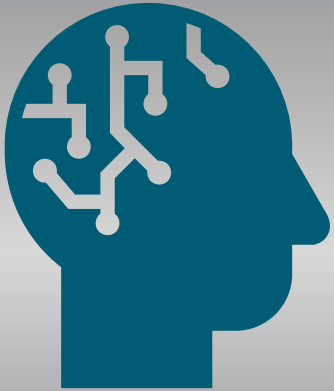
## Strong Partners Network

With established presence in Africa, Bulgaria, Cyprus, and Qatar, our company boasts a diverse and expansive reach across multiple continents. By strategically establishing operations in these regions through our official partners, we tap into unique opportunities for growth and collaboration while leveraging local expertise to better cater to the needs of our clientele. Our strong presence allows us to cultivate deep-rooted relationships within each community, facilitating seamless communication, understanding, and engagement.



# Academy Courses

Online training of partners and staff



At our company, we have taken a proactive approach to knowledge sharing and professional development by establishing an Academy dedicated to training both partners and staff. By investing in ongoing training and skill enhancement, we empower our partners and staff to excel in their roles, drive innovation, and deliver exceptional results for our clients.

# 24/7 Support

We have a dedicated support team

## Technical Support

We provide our clients with the invaluable benefit of continuous accessibility and assistance. Our customers can reach out to us at any time, day or night, for prompt resolution of their queries, concerns, or issues. This unwavering support fosters trust and reliability, enhancing customer satisfaction and loyalty.

## In house Development Team

Our team's expertise enables us to craft highly customized solutions tailored to address specific challenges and objectives, providing a level of precision and effectiveness unmatched by off-the-shelf alternatives. By collaborating closely with our clients throughout the development process, we ensure that every aspect of the solution meets their exact needs, fostering greater efficiency, productivity, and satisfaction.



# GPRS Capabilities



[Fleet Management](#)



[Live Tracking](#)



[Theft Protection](#)



[Instant Alerts](#)



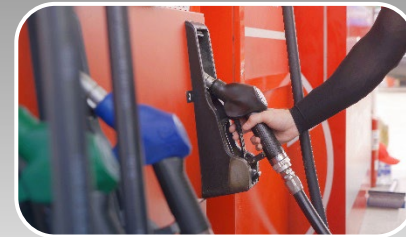
[Tachograph Data](#)



[Cost Control](#)



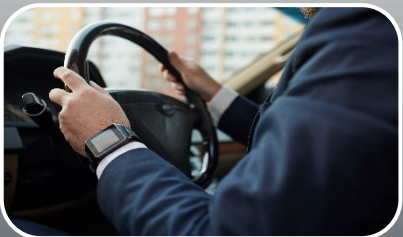
[History Data](#)



[Fuel Control](#)



[Cold Chain](#)



[Driving Behavior](#)



[ECO Driving](#)



[Smart Routing](#)



[Remote Control](#)



[Maintenance](#)

Our platform is constantly being upgraded with new features in order to be able to provide you with the most complete, easy-to-use and reliable fleet management platform – the best solution on the market!



## Contact Us

### Thessaloniki:

Perikleous 0, Spectra Building, Themi  
+30 2310365067  
info@skytrack.gr

### Athens:

Merlin 7, Kolonaki  
+30 2102202603  
info@skytrack.gr

### Cyprus:

Steliou Mavromati 60  
+357 22030280  
info@skytrack.gr

### Bulgaria:

Vitosha Blvd. 1, Sofia  
+359 24929395  
info@skytrack.bg



- [www.skytrack.org](http://www.skytrack.org) -